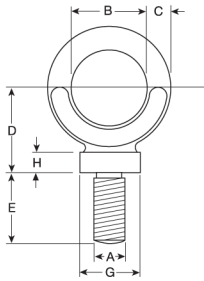


Dynamo Eyebolts - Whitworth Thread



- Higher tensile steel.
- Self colour finish.
- Electro galvanised finish available on request.
- Tested and certified.
- To be used for vertical lifting only.

Code	Vertical SWL Tonnes	A mm	B mm	C inches	D inches	E mm	G inches	H mm	Weight Kgs/each
L1301	0.10	¼	22	10	26	19	19	6	0.08
L1302	0.15	⅜	22	10	26	19	19	6	0.09
L1303	0.25	½	22	10	26	19	19	6	0.09
L1304	0.50	⅝	29	10.3	35	26	25	8	0.14
L1305	0.80	¾	32	13	41	30	29	9.5	0.24
L1306	1.20	⅞	41	16	54	33	35	11.1	0.43
L1307	2.20	1	52	20.4	62	46	41	12.7	0.88

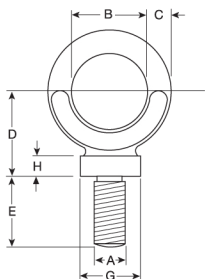


Dynamo Eyebolts - Metric Thread



- Higher tensile steel.
- Self colour finish.
- Electro galvanised finish available on request.
- Tested and certified.
- To be used for vertical lifting only.

Code	Vertical SWL Tonnes	A mm	B mm	C mm	D mm	E mm	G mm	H mm	Weight Kgs/each
L1401	0.10	6	22	9	27	18	17	5	0.07
L1402	0.15	8	22	9	27	18.5	17	5	0.07
L1403	0.25	10	22	9	27	18.5	17	5	0.07
L1404	0.32	12	22	9	27	18.5	17	5	0.07
L1405	0.63	16	29	11	34	23.5	23	6	0.14
L1406	1.25	20	40	15	47	33	32	9	0.40
L1407	2.00	24	51	19	60	41	40	12	0.80
L1408	3.20	30	64	24	76	51	51	14	1.72



NEVER EXCEED MAXIMUM CAPACITY

Ensure operator follows safe use instruction guidelines